

Juba Dance

Florence Price
arr. Iain Farrington

Allegro (♩ = c.104)



50 **C**

Measures 50-56. Section C. Treble clef: eighth-note chords and single notes with rests. Bass clef: simple accompaniment of eighth notes and rests.

57

Measures 57-65. Treble clef: melodic line with accents and dynamics *mf* and *f*. Bass clef: simple accompaniment.

66 **D**

Measures 66-73. Section D. Treble clef: melodic line with accents and dynamics *f*. Bass clef: simple accompaniment.

74

Measures 74-81. Treble clef: melodic line with accents and dynamics *p*. Bass clef: simple accompaniment.

82 **E**

Measures 82-88. Section E. Treble clef: melodic line with accents and dynamics *mf*. Bass clef: simple accompaniment.

90

Measures 89-95. Treble clef: melodic line with accents and dynamics *p* and *mf*. Bass clef: simple accompaniment.

98 **F**

p *mf*

105

f

111 rit. **G** a tempo

mf

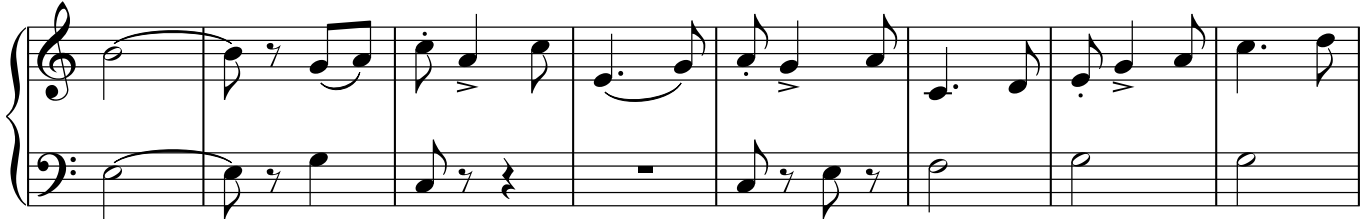
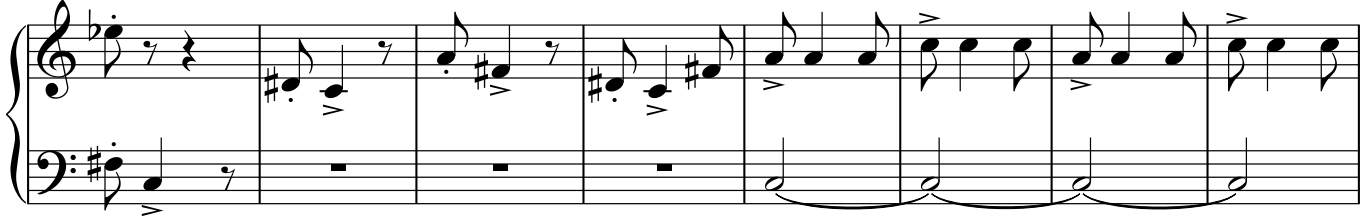
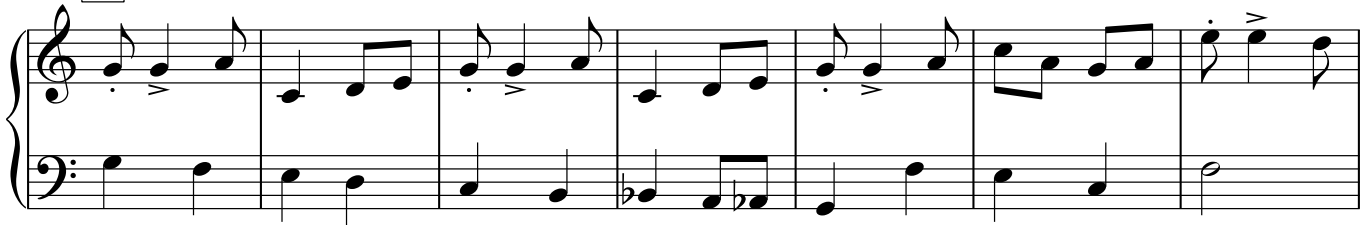
119 **H**

ff

127

134 **I**

141

149 **J**157 **K** Slower

164

L

172 poco rit.

Tempo primo

179 **M**